

SUPPLEMENTARY MATERIAL TO:

Maćko, A., Kowalski, A. & Roessler, R., 2026. Late Carboniferous woody debris, secondarily embedded in Quaternary deposits in the Sudety Mts, SW Poland. *Annales Societatis Geologorum Poloniae*, 96: 49–65. <https://doi.org/10.14241/asgp.2026.01>

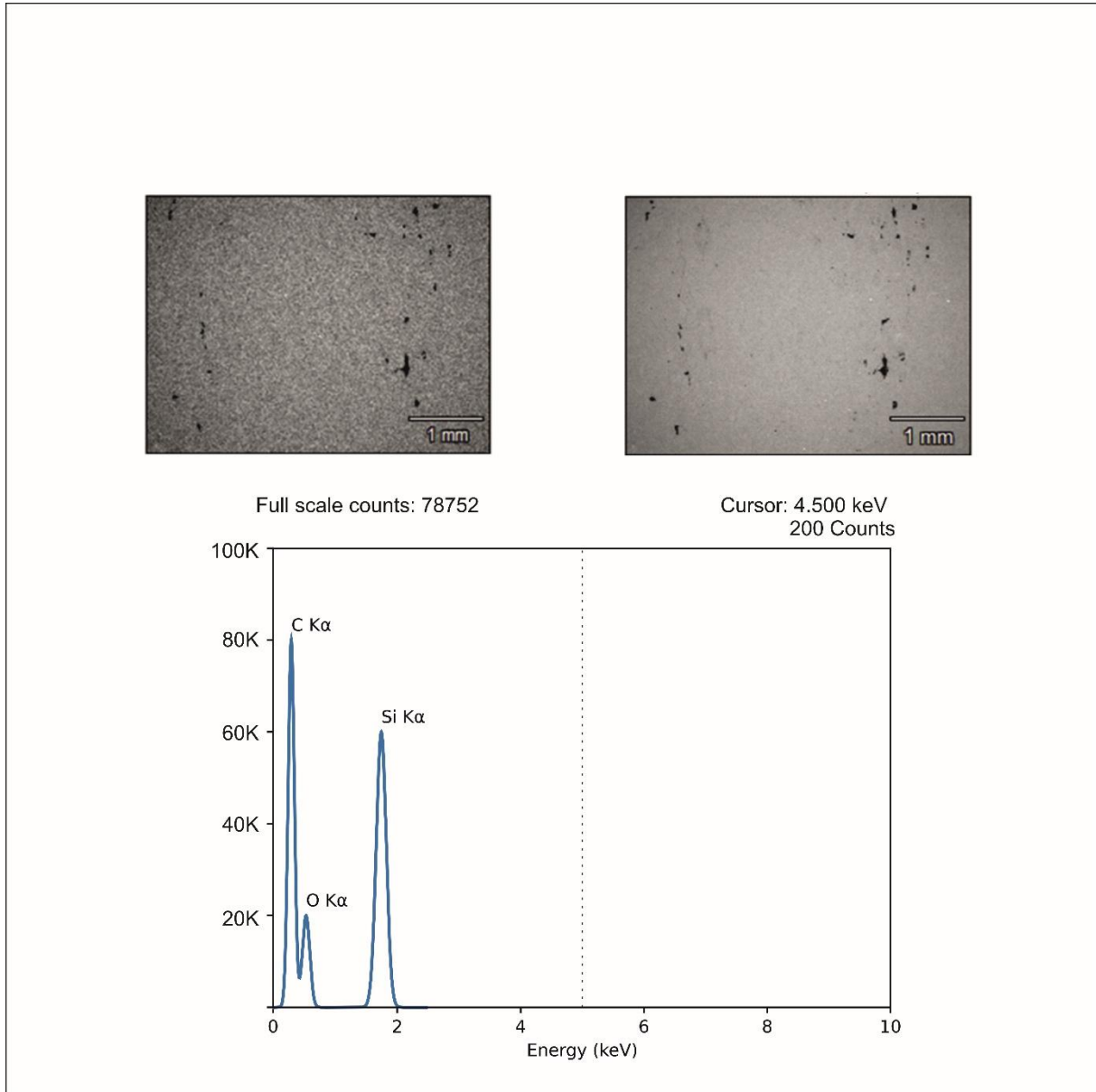


Fig. S1. Backscattered-electron (BSE) image of permineralized wood, showing the heterogeneity of mineral infillings. Bright regions correspond to high-Z phases (silica and Fe-rich minerals), medium-grey areas represent partially mineralized cell walls, and dark regions indicate voids or low-Z phases, possibly remnants of organic matter. Anatomical features, such as cell lumina, tracheid walls, and secondary cracks, filled with mineral phases, are preserved. Analytical conditions: accelerating voltage 15 kV, magnification 27 \times , image resolution 512 \times 384 pixels (pixel size 9.28 μm), element maps acquired at 256 \times 192 pixels (pixel size 18.55 μm).